

IsoTruss PIM Armor© Panel Standard Installation Instructions

Recommended Materials:

- IsoTruss Panels
- 3M VHB (Very High Bond) Tape (Not included with PIM Armor© purchase)
- Deltec Straps (Not included with PIM Armor© purchase)
- Acetone or Other Cleaning Solution
- Aluminum Oxide or Diamond Grinding/Cutting Discs
- Eye Protection
- Dust Mask

Safety Warning:

- *Always wear eye protection and a N95 dust mask or ventilator while cutting composite panels.*
- *While cutting, have a small shop vac follow the blade as its cutting to suck up the dust.*

Doing these precautions prevent the carbon dust from polluting the lungs, the atmosphere and the environment.

Install Panels to Back of Antenna

1. Cutting the Antenna to fit:

- Ensure the antenna has proper work holding before cutting. Clamp them onto saw horses or a table.

- A jigsaw, reciprocating saw, or handheld cut-off tool would best for cutting carbon fiber On site.

2. Prepare the Antenna Surface:

- Ensure the antenna is clean and free of any debris by wiping with rag or cloth.
- With rag or cloth use acetone or isopropyl alcohol to clean the back of the antenna

3. Prepare the Panels:

- Ensure both or one panel are clean and free of any debris by wiping with rag or cloth.
- With rag or cloth use acetone or isopropyl alcohol to clean the back of the panel.
- If applying PIM Armor to an 8ft antenna there will be two 4ft panels. If applying PIM Armor to a 6ft long antenna there will be one panel.

4. Apply 3M VHB Tape:

- Apply one side of VHB tape to the back of the panel.
- Tape is to be applied along the full perimeter of the panel.
- A minimum of 4in^2 of 3M VHB Tape must be applied per 1-lb of panel weight

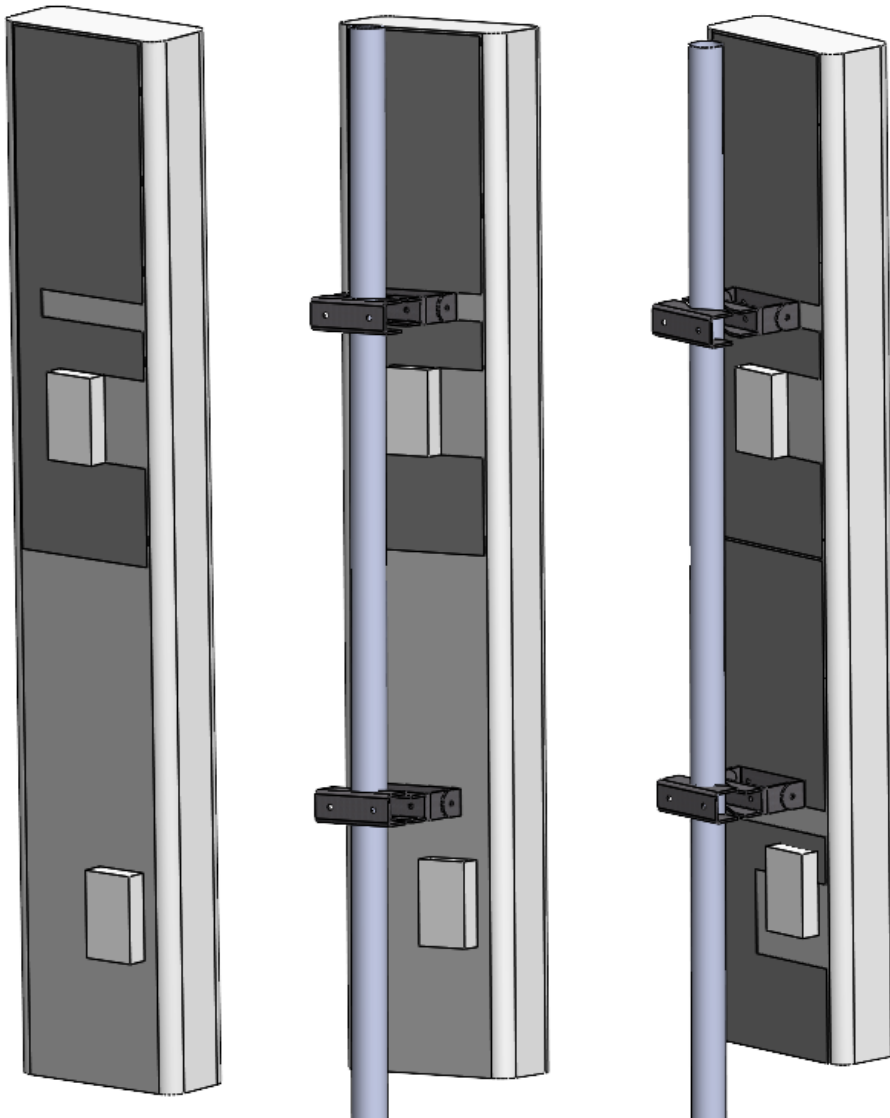


The picture is an example 2x4 panel cut to fit a commscope antenna with red being the 3M VHB tape.



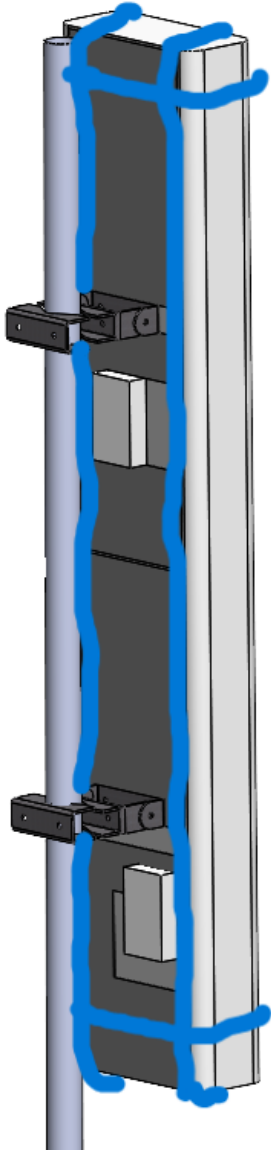
5. Mount the Panels:

- Peel the other side of the VHB tape to expose the sticky side.
- Carefully position the first panel if it's an 8ft antenna or one panel if it's a 6ft onto the back of the antenna, ensuring proper alignment.
- The second panel going under the first panel should butt up against or should be as close as possible to the top 4 foot long panel. This instruction is for 8ft antennas.
- Once properly aligned press firmly on all parts of the panel to ensure proper adhesion to the back of the antenna.



6. Apply Deltec Straps:

- Deltec TX-CSS Straps to be applied both horizontally and vertically around the panel.



The straps are represented in blue.

Contact Information:

For any questions or concerns, please contact IsoTruss at isotruss@isotruss.com or 801-477-0812.